

## Kupplung NW19

Profil kompatibel zu Hansen Serie 6ST

Medien: Wasser, Luft  
 Betriebsdruck: max. 10 bar bei  
 Betriebstemperatur 20°C  
 Material: Körper Messing,  
 Kugeln, Feder Edelstahl  
 Dichtmaterial: NBR/EPDM/FKM  
 Verriegelungsart: Kugeln

## Coupling DN19

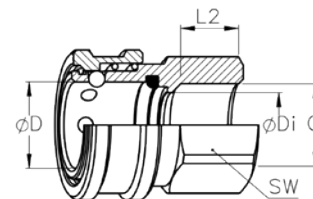
profile compatible with Hansen Series 6ST

Matter: water, air  
 Operating pressure: max. 10 bar at  
 operating temperature 20°C  
 Material: body brass,  
 balls, spring stainless steel  
 Sealing material: NBR/EPDM/FKM  
 Locking mechanism: ball lock

## Kupplung mit Innengewinde NW19

Coupling with female thread

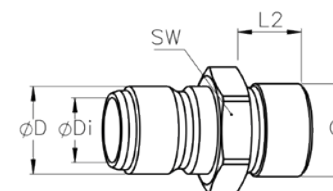
| NW<br>DN | C    | D<br>mm | Di<br>mm | SW<br>mm | L2<br>mm | Artikel-Nr. /<br>Item No. |
|----------|------|---------|----------|----------|----------|---------------------------|
| 19       | G3/4 | 25      | 19       | 36       | 18       | 21006321                  |



## Nippel mit Außengewinde NW19

Nipple with male thread

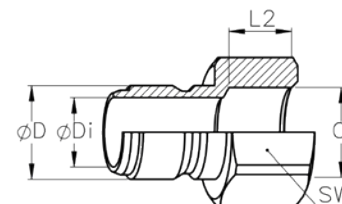
| NW<br>DN | C         | D<br>mm | Di<br>mm | SW<br>mm | L2<br>mm | Artikel-Nr. /<br>Item No. |
|----------|-----------|---------|----------|----------|----------|---------------------------|
| 19       | G3/4      | 25      | 18       | 32       | 19       | 21006100                  |
|          | R3/4      | 25      | 18       | 27       | 15       | 21006102                  |
|          | NPT3/4-14 | 25      | 18       | 27       | 15       | 21006101                  |



## Nippel mit Innengewinde NW19

Nipple with female thread

| NW<br>DN | C    | D<br>mm | Di<br>mm | SW<br>mm | L2<br>mm | Artikel-Nr. /<br>Item No. |
|----------|------|---------|----------|----------|----------|---------------------------|
| 19       | G3/4 | 25      | 18       | 36       | 18       | 21006211                  |
|          | G1   | 25      | 18       | 36       | 30       | 21006220                  |



## Kupplung NW25

Profil kompatibel zu Hansen Serie 8ST

Medien: Wasser, Luft  
 Betriebsdruck: max. 10 bar bei  
 Betriebstemperatur 20°C  
 Material: Körper Messing,  
 Kugeln, Feder Edelstahl  
 Dichtmaterial: NBR/EPDM/FKM  
 Verriegelungsart: Kugeln

## Coupling DN25

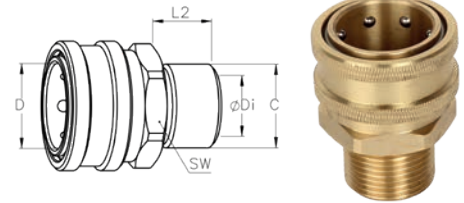
profile compatible with Hansen Series 8ST

Matter: water, air  
 Operating pressure: max. 10 bar at  
 operating temperature 20°C  
 Material: body brass,  
 balls, spring stainless steel  
 Sealing material: NBR/EPDM/FKM  
 Locking mechanism: ball lock

## Kupplung mit Außengewinde NW25

Coupling with male thread

| NW<br>DN | C         | D<br>mm | Di<br>mm | SW<br>mm | L2<br>mm | Artikel-Nr. /<br>Item No. |
|----------|-----------|---------|----------|----------|----------|---------------------------|
| 25       | G1        | 33,5    | 24       | 44       | 24       | 21006301                  |
|          | NPT1-11,5 | 33,5    | 24       | 44       | 24       | 21006302                  |



## Nippel mit Außengewinde NW25

Nipple with male thread

| NW<br>DN | C         | D<br>mm | Di<br>mm | SW<br>mm | L2<br>mm | Artikel-Nr. /<br>Item No. |
|----------|-----------|---------|----------|----------|----------|---------------------------|
| 25       | G1        | 33,5    | 24       | 36       | 24       | 21006105                  |
|          | R1        | 33,5    | 24       | 36       | 15       | 21006106                  |
|          | NPT1-11,5 | 33,5    | 24       | 36       | 15       | 21006107                  |

